



WAREWASH

FREEDOM SYSTEM™ DE-F2.....5
 FREEDOM SYSTEM™ DE-F3.....6
 FREEDOM SYSTEM™ DE-W2.....7
 3 PUMP BETA.....8
 FREEDOM DE RETRO.....9
 GLADIATOR RETRO.....10
 MINIMAX DOCKING STATION.....11
 901 POT W/KIT & VAC BREAK.....12
 FREEDOM DE F2.....13
 FREEDOM DE F3.....14
 FREEDOM DE W2.....15
 SINGLE SHOT.....16
 LTC 3.....17
 D250 SANITIZER.....18



FREEDOM SYSTEM™ DE-F2

3668444, 3668401, 3212181, 3212201



Freedom System™ DE-F2 with Thermal Sensor Probe	3668444
Freedom System™ DE-F2 with Internal Pressure Switch and Thermal Sensor	3668401
Freedom System™ DE-F2 Probeless	3212181
Freedom System™ DE-F2 with Pressure Switch Probeless	3212201

No.	Description	Part No.	No.	Description	Part No.
1	1/4" Poly Flow @ 15'	011472	5	1/4 Poly x 1/8 npt Brass Str.	011396
2	3/16" ID X 3/8" OD Tan Santoprene tubes, 9" piece, ea.	011585	6	7 Cond. Wire @ 20'	3338550
3	Silicone Grease (1 oz Tube)	014433	7	Thermal Sensor Probe (for DE)	011836
4	1/8 X 1/8 X 1/8 Street Tee	011442			

See Install Kit page 7.



FREEDOM SYSTEM™ DE-F3

3668428, 3668436, 3212076



Freedom System™ DE - F3 with Thermal Sensor Probe	3668428
Freedom System™ DE - F3 with Internal Pressure Switch & Thermal Sensor Probe	3668436
Freedom System™ DE - F3 without Internal Pressure Switch, Probeless	3212076
Freedom System™ DE - F3 with Internal Pressure Switch, Probeless	3212130

No.	Description	Part No.	No.	Description	Part No.
1	1/4" Poly Flow @ 15'	011472	5	1/4 Poly x 1/8 npt Brass Str.	011396
2	3/16" ID X 3/8" OD Tan Santoprene tubes, 9" piece, ea.	011585	6	7 Cond. Wire @ 20'	3338550
3	Silicone Grease (1 oz Tube)	014433	7	Thermal Sensor Probe (for DE)	011836
4	1/8 X 1/8 X 1/8 Street Tee	011442			

See Install Kit page 8.



FREEDOM SYSTEM™ DE-W2

3668452, 3668399, 3478907, 3478878



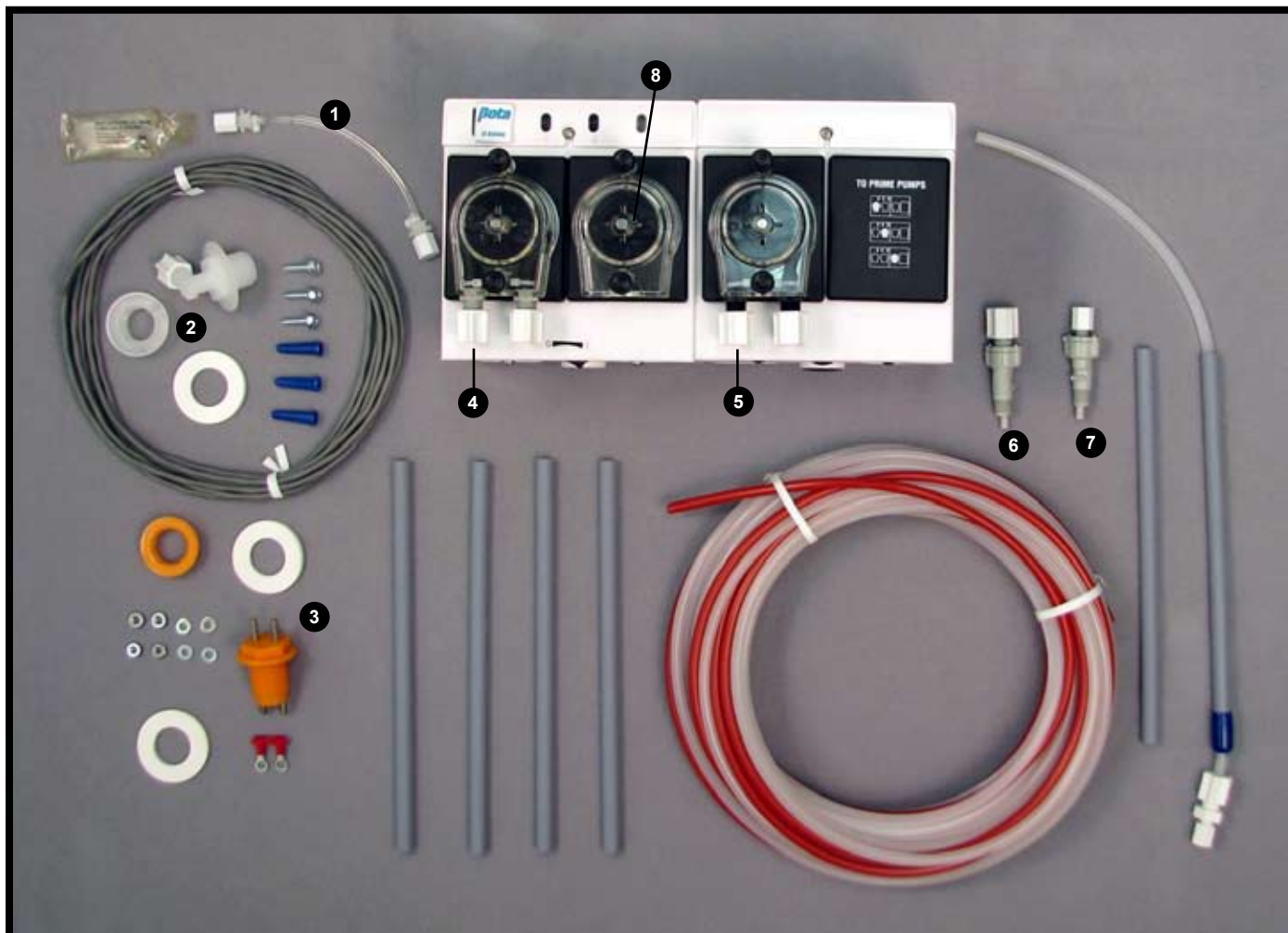
Freedom System™ DE-W2 with Thermal Sensor Probe	3668452
Freedom System™ DE-W2 with Internal Pressure Switch and Thermal Sensor Probe	3668399
Freedom System™ DE-W2 Probeless	3478907
Freedom System™ DE-W2 with Pressure Switch Probeless	3478878

No.	Description	Part No.	No.	Description	Part No.
1	1/4" Poly Flow @ 15'	011472	5	1/4" Hose Barb	011429
2	3/16" ID X 3/8" OD Tan Santoprene tubes, 9" piece, ea.	011585	6	1/4 Poly x 1/8 npt Brass Str.	011396
3	Silicone Grease (1 oz Tube)	014433	7	7 Cond. Wire @ 20'	3338550
4	1/8 X 1/8 X 1/8 Street Tee	011442	8	Thermal Sensor Probe (for DE)	011836

See Install Kit page 9.



3 PUMP BETA WITH KIT 1209565



No.	Description	Part No.
1	JD 100 Series Rinse Tube	3720100
2	JD 100 Series Bulkhead Fitting	3762924
3	Button Probe	011770
4	Accy Kit, TBG SIA 5 oz NRDL, DET	058550
5	D250 Sanitizer Tube	3757578
6	1/4" Polychex x 1/8" npt Check Nylon	011675
7	1/8" Check Valve x 1/8" npt	020977
8	JD 100 Series Pumphead	3712370



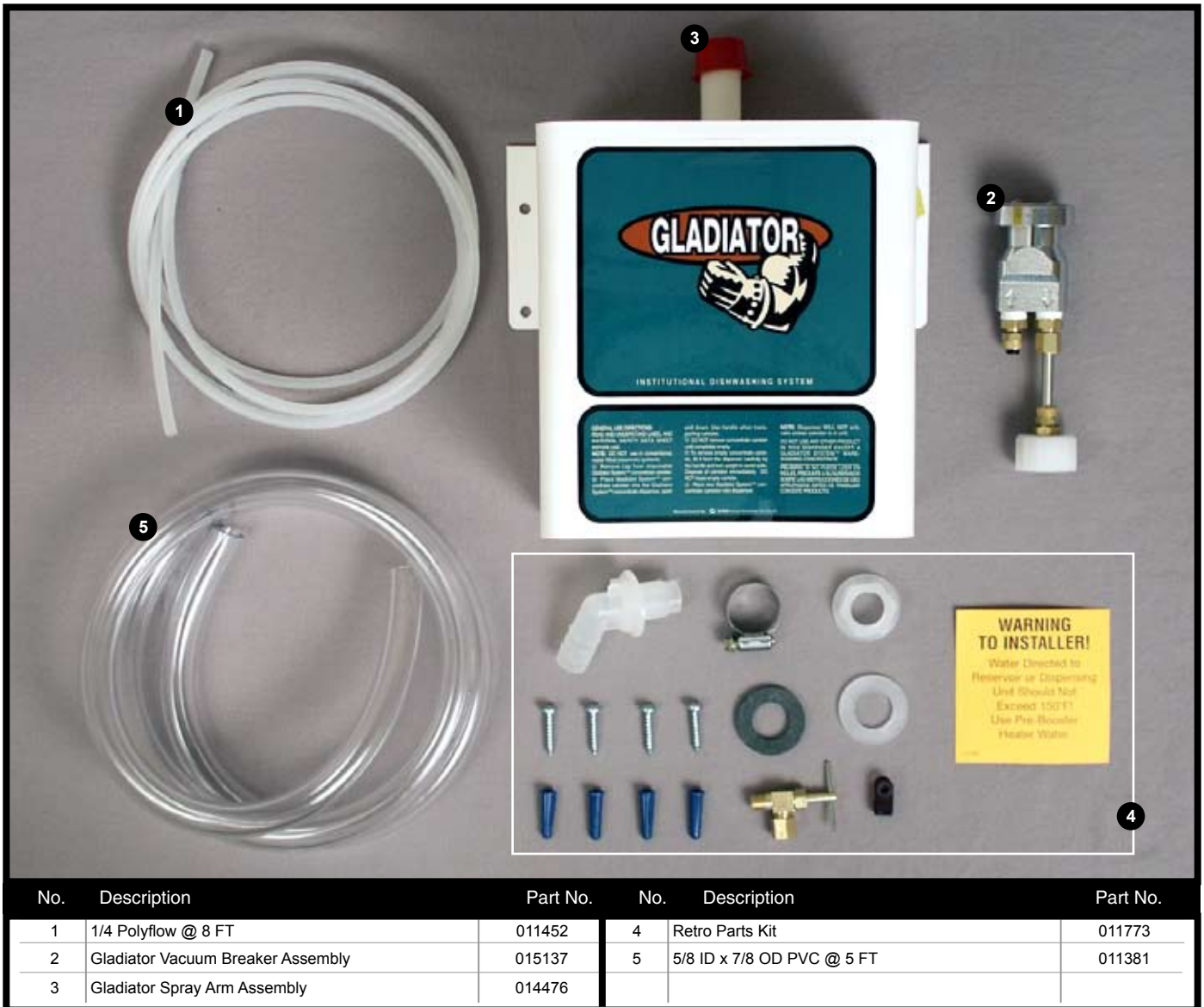
FREEDOM DE RETRO WITH TUBING AND KIT 3338568



No.	Description	Part No.	No.	Description	Part No.
1	1/4 Polyflow @ 8 FT	011452	4	5/8 ID x 7/8 OD PVC @ 5 FT	011381
2	Vacuum Breaker Assembly	014467	5	Retro Parts Kit	011773
3	Freedom Retro Spray Arm with Nozzle	014449			



GLADIATOR RETRO WITH KIT 014640

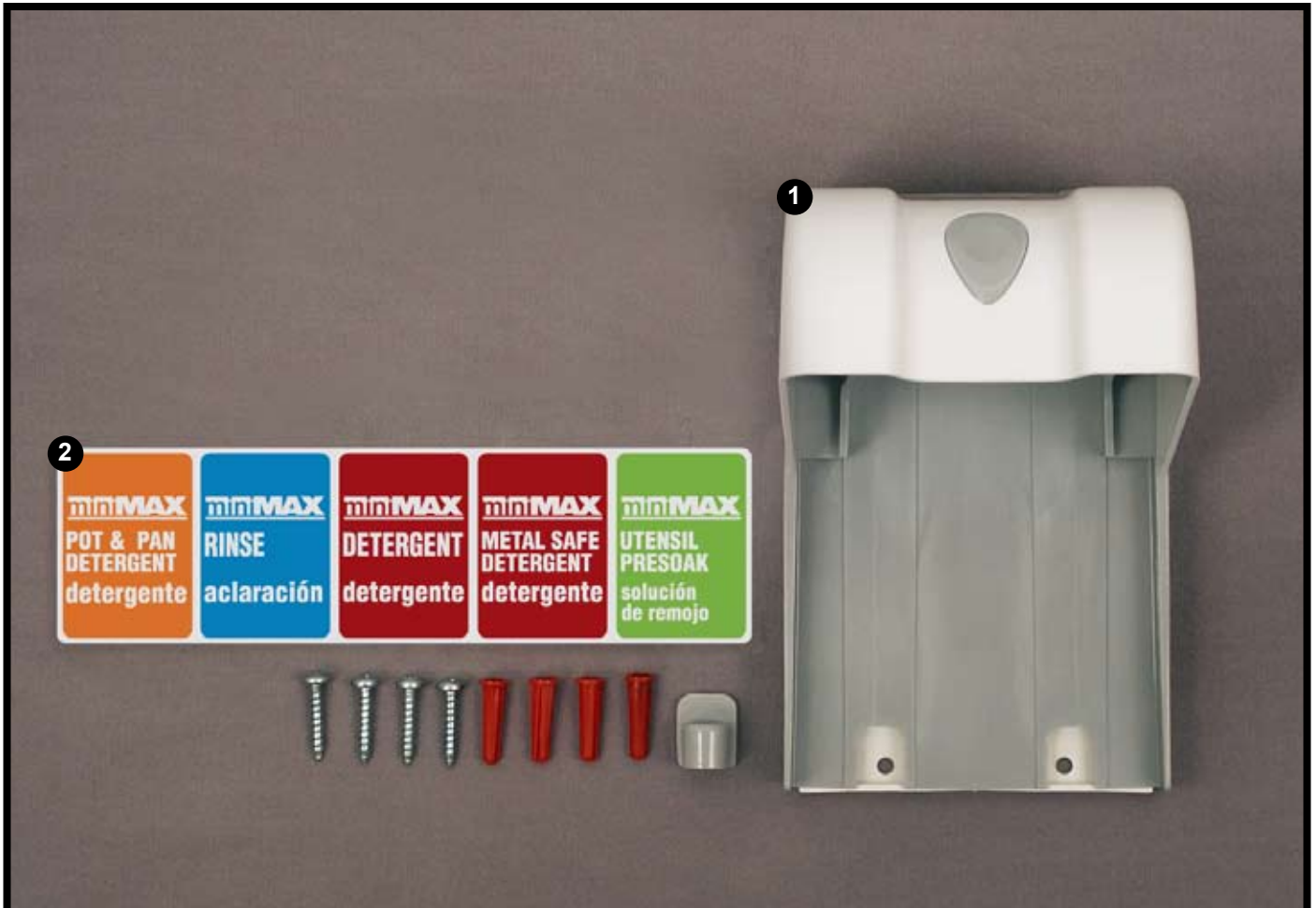


No.	Description	Part No.	No.	Description	Part No.
1	1/4 Polyflow @ 8 FT	011452	4	Retro Parts Kit	011773
2	Gladiator Vacuum Breaker Assembly	015137	5	5/8 ID x 7/8 OD PVC @ 5 FT	011381
3	Gladiator Spray Arm Assembly	014476			



MINIMAX DOCKING STATION

4489835

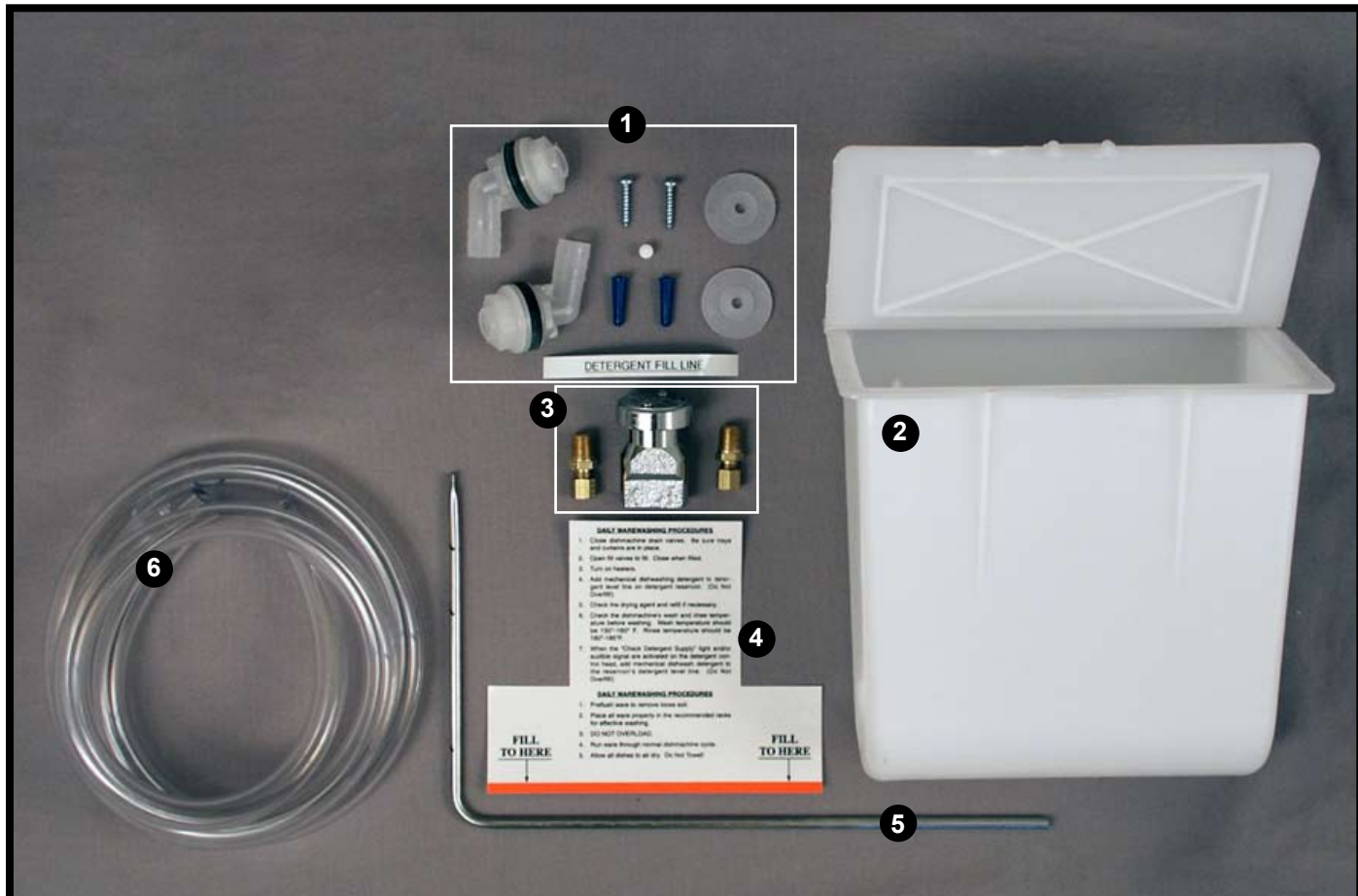


No.	Description	Part No.
1	MiniMax Docking Station	4489835
2	Labels "only"	4486079



901 POT W/KIT & VAC BREAK

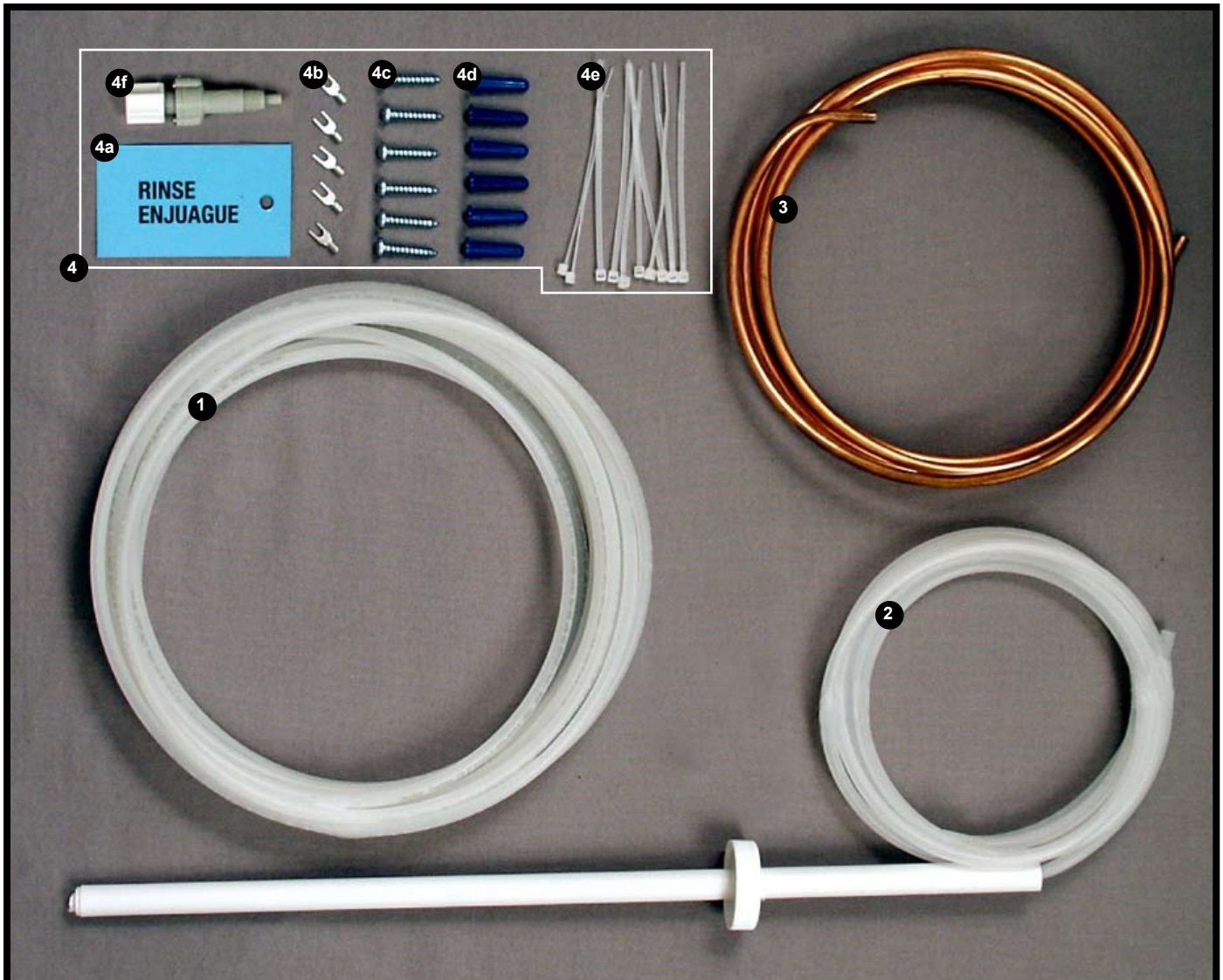
011757



No.	Description	Part No.	No.	Description	Part No.
1	901 Overflow Kit	011756	4	Det. Fill Level Sticker	011963
2	901 Pot		5	901 Pot Spray Arm 90 Degree	011410
3	Vacuum Breaker Kit	011753	6	5/8 ID x 7/8 OD PVC @ 5 FT.	011381



FREEDOM DE F2 KIT WITH TUBE 3357056



No.	Description	Part No.	No.	Description	Part No.
1	1/4 Polyflow @ 15 FT	011472	4b	Spade Terminal Per Each	011353
2	5 GAL Standpipe 1/4 Polyflow	014499	4c	Sheet Metal Screw	011704
3	1/4 Copper Tubing @ 10 FT	011459	4d	Wall Anchor	011705
4	Freedom DE F2 Parts Kit (1/4")	011776	4e	4 1/2" Pull Tie Per Each	011358
4a	WW Standpipe Tag Rinse	014144	4f	1/4 Poly x 1/8 npt Nylon Check Valve	011675



FREEDOM DE F3 INSTALL KIT 3357048



No.	Description	Part No.	No.	Description	Part No.
1	1/4" Polyflow @ 25 Ft	011476	4c	WW Standpipe Tag Sanitizer	014147
2	5 Gal Standpipe 1/4 Polyflow	014499	4d	Spade Terminal Per Each	011353
3	1/4 Copper Tubing @ 10 Ft	011459	4e	Low Temp Conversion Sticker	011982
4	Freedom DE Parts Kit F3 (1/4")	011777	4f	Sheet Metal Screw	011704
4a	4 1/2 Inch Pull Tie	011358	4g	Wall Anchor	011705
4b	WW Standpipe Tag Rinse	014144	4h	1/4 Poly X 1/8 NPT Check Nylon	011675



FREEDOM DE W2 INSTALL KIT 3357030



No.	Description	Part No.	No.	Description	Part No.
1	1/4" Polyflow @ 15 FT	011472	5e	Sheet Metal Screw	011704
2	5 GAL Standpipe 1/4 Polyflow	014499	5f	4 1/2" Pull Tie Per Each	011358
3	1/4 Poly x 1/8 NPT Nylon Check Valve	011675	5g	P6T54 Tube Support	011436
4	1/4 ID x 3/8 OD PVC @ 15 FT	011464	5h	1/4" Hosebarb Fitting	011429
5	Freedom DE Parts Kit WW2 1/4"	011778	5i	Plastic Overflow Washer	011723
5a	WW Standpipe Tag Rinse	014144	5j	Basin Nut	011702
5b	WW Standpipe Tag Detergent	014141	5k	Rubber Overflow Washer	011701
5c	Spade Terminals Per One	011353	5n	3/8" Poly x 1/2" mpt Parker Straight	011430
5d	Wall Anchor	011705			



SINGLE SHOT

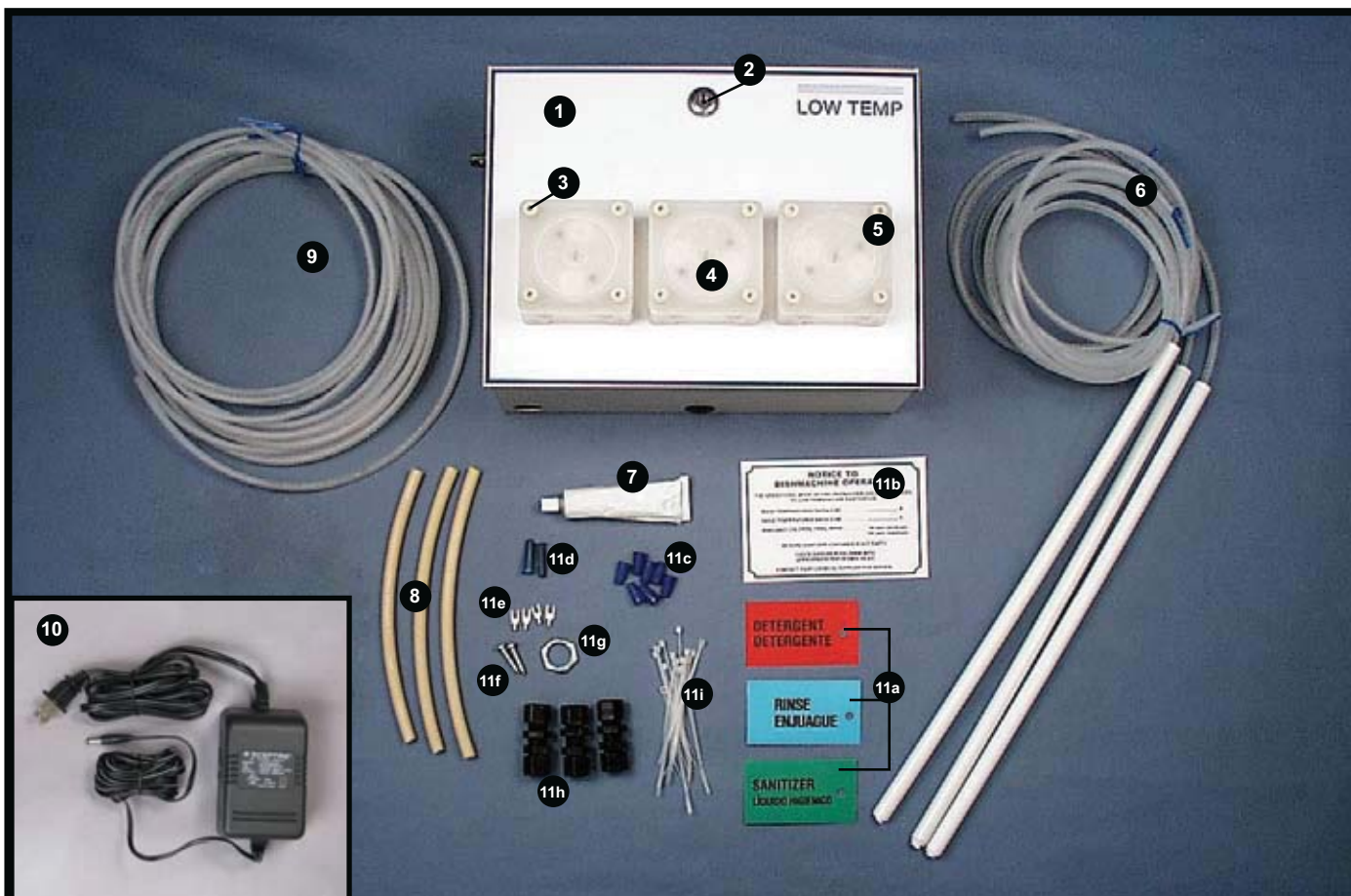
3763775



No.	Description	Part No.	No.	Description	Part No.
1	Black EPDM Tube For Snap Head	058550	2	1/4" Polyflow Per Foot	011385



LTC 3 COMPLETE 014696

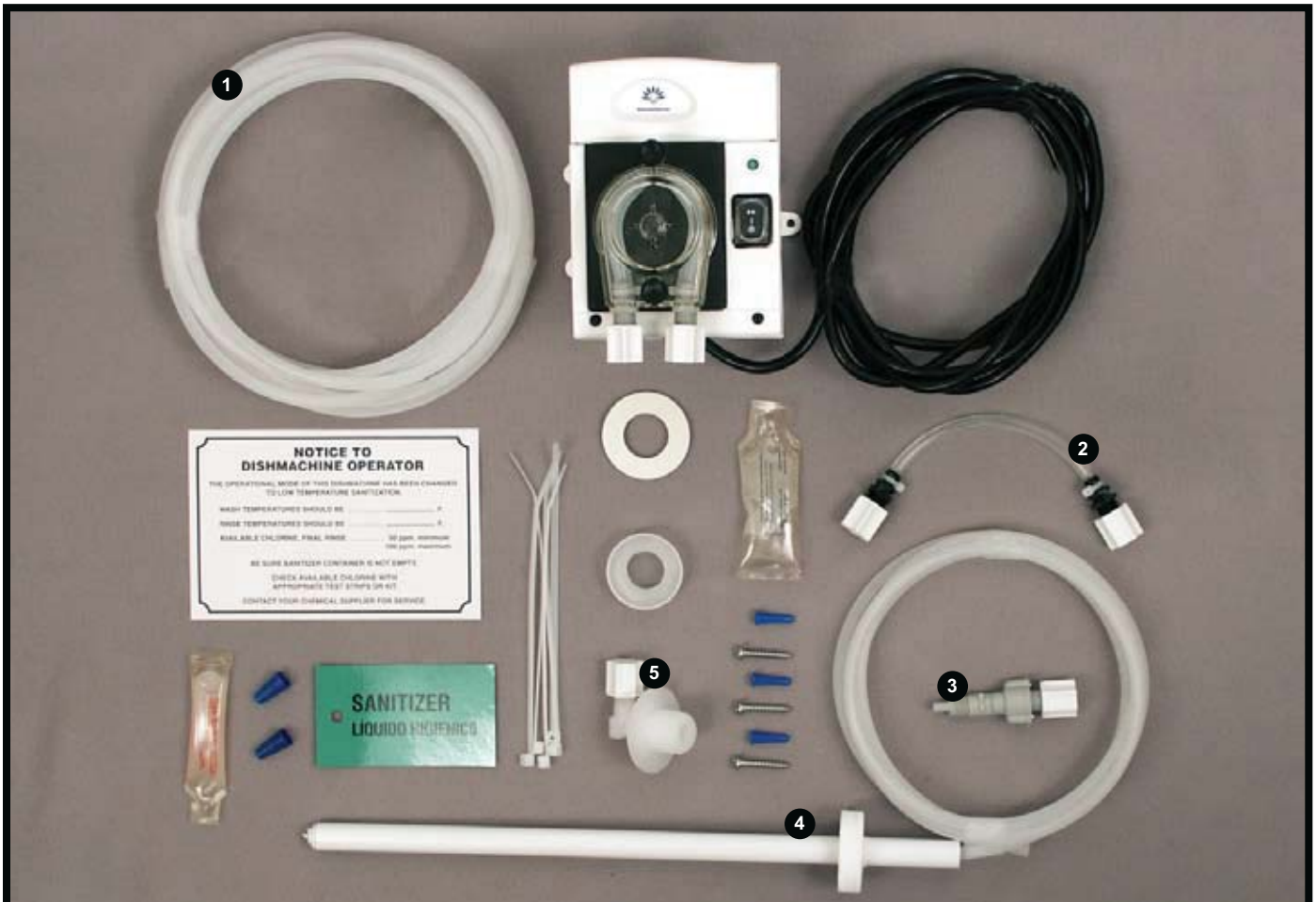


No.	Description	Part No.	No.	Description	Part No.
1	Low Temp 3 Complete (Includes Everything Pictured)	014696	11b	Low Temp Conversion Sticker	011982
2	Lock and Key Set	014219	11c	72B Wire Nut	011352
2a	Key Only (Not Pictured)	015045	11d	Wall Anchor	011705
3	10/32 Nylon Thumb Nut	014559	11e	Spade Terminals	011353
4	Pump Head Complete "A" Position	011531	11f	Sheet Metal Screw 10 x 1	011704
5	Spider Only "A" Position	011587	11g	1/2" Locknut	011008
6	5 Gallon Standpipe w/Polyflow	014499	11h	1/4" Bulkhead Union	011420
7	1 Ounce Silicone Grease	014433	11i	4" Pull Ties	011358
8	Santoprene Tube 9" 3/16" id x 3/8" od (Tan)	011585	12	Replacement O-Ring 1/4" For Bulkhead (Not Pictured)	011716
9	1/4" Polyflow 100' Roll	011479	13	Replacement Low Temp Board (Not Pictured)	014594
10	Plug in Transformer	011234	14	Replacement Prime Switch Board (Not Pictured)	014560
11	Low Temp 3 Parts Kit Only 11a-11i	011855	15	Replacement Motor 24V.DC. Det/San (Not Pictured)	015048
11a	Warewash Standpipe Tag Set	011966	16	Replacement Motor 24V.DC. 28 RPM Rinse (Not Pictured)	3033140



D250 SANITIZER

014562



No.	Description	Part No.	No.	Description	Part No.
1	1/4" Polyflow Per Foot	011385	4	1 Gallon Standpipe	014493
2	D250 Sanitizer Tube	3757578	5	1/4 Poly x 7/8 mpt Bulkhead	3762924
3	1/4 Poly x 1/8 npt Nylon Check Valve	011675			